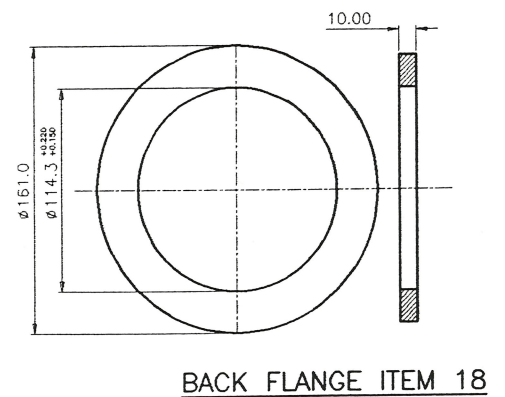
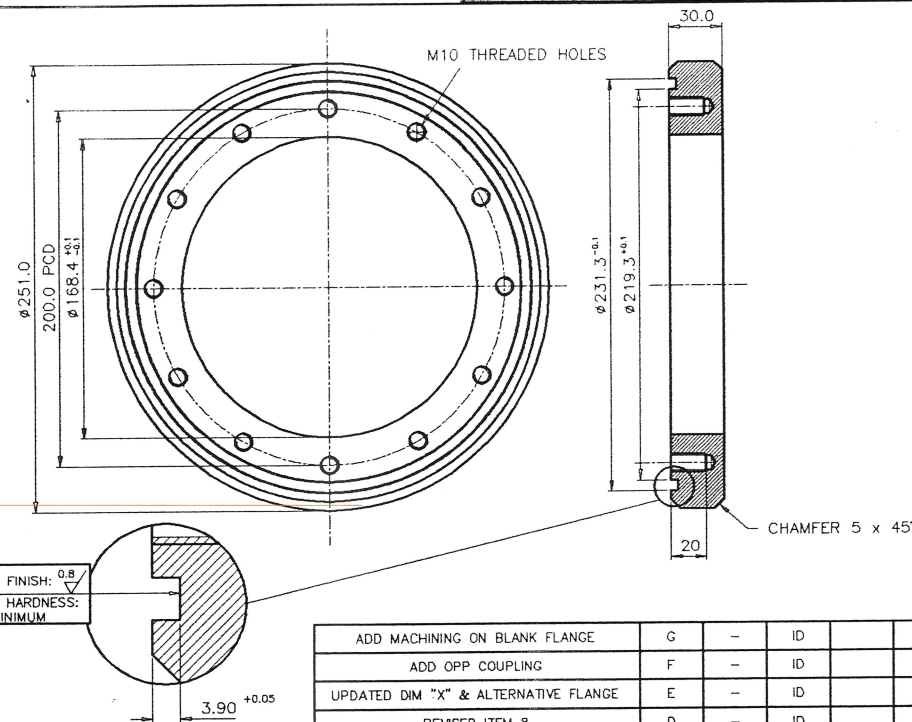
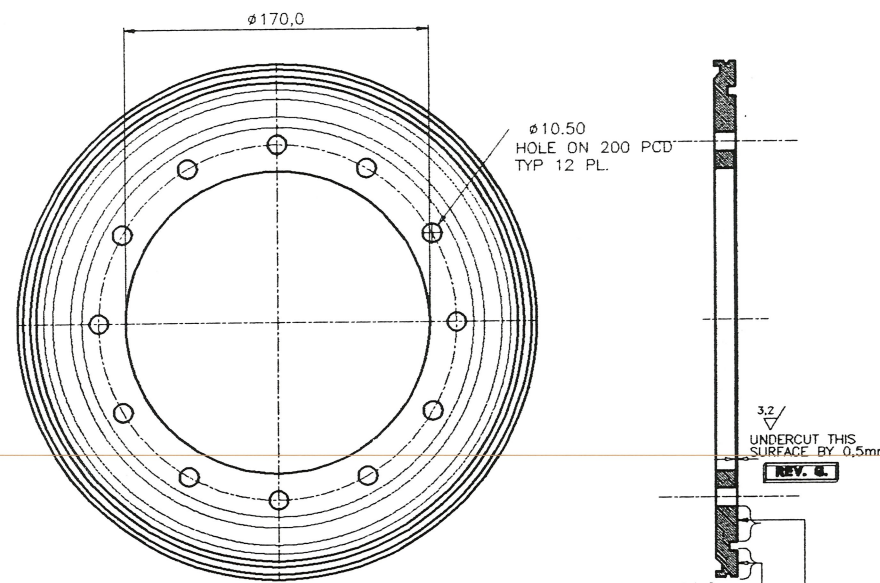
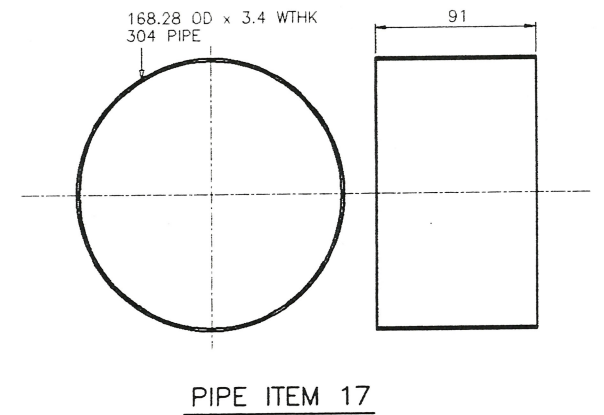




ITEM	DESCRIPTION	QTY PER FLANGE
1	M8 x 50 LONG BOLT	8
2	100NB BOLTED FLANGE	2
3	DN100CF (BN845038-T) COPPER SEAL	1
4	M8 NUT	8
5	M10 NUT	12
6	M10 STUD x 55 LONG	12
7	HELICOFLEX HNV200 SEAL	1
8	BLANK FLANGE DN ISO-K 250 (MODIFIED)	1
9	RETAINING RING FOR DN ISO-F 250 FLANGE	2
10	M10 x 50 BOLT	12
11	DN ISO-F BOLTED FLANGE 250	2
12	ULTRA HIGH-VACUUM DISK DN ISO-F	1
13	DN ISO-F BOLTED FLANGE	2
14	M10 NUTS	12
15	CLAMP FLANGE DN ISO-K 250	1
16	FLANGE PER DRAWING	1
17	PIPE 168,28 OD x 3,4 WTHK	1
18	BLANK FLANGE PER DRAWING	1
19	PIPE 114,30 OD x 3,05 WTHK	A/R
20	BRAIDED CORRUGATED FLEXIBLE METAL HOSE x 200 LONG	A/R
21	M8 WASHER STAINLESS STEEL 304	8
22	M8 SPRING WASHER STAINLESS STEEL 304	8
23	M10 WASHER STAINLESS STEEL 304	24
24	M10 SPRING WASHER STAINLESS STEEL 304	24



NOTES: (UNLESS OTHERWISE STATED)		MATERIAL		TOLERANCES UNLESS OTHERWISE STATED	
1) REMOVE ALL BURRS & SHARP EDGES TO 0,5x45° MAX.	4) ALL INTERNAL RADI 0,8 MAX.	STAINLESS STEEL 304	ANGLES ±1°	0	21
2) SCREW THREADS TO ISO 261				20	200
3) SURFACE TEXTURE: (Ra TO ISO 1302)				1000	3000

ADD MACHINING ON BLANK FLANGE	G	—	ID			GDL	92-10-26			TITLE : SHROUD PIPE FLANGE DETAIL												
ADD OPP COUPLING	F	—	ID			GDL	92-7-10			ISSUE    A    B    C    D    E    F    G												
UPDATED DIM "X" & ALTERNATIVE FLANGE	E	—	ID			GDL	92-7-8			TO SABS 0111												
REVISED ITEM 8	D	—	ID			GDL	92-4-30			DRG NO : VTFO-12600-122												